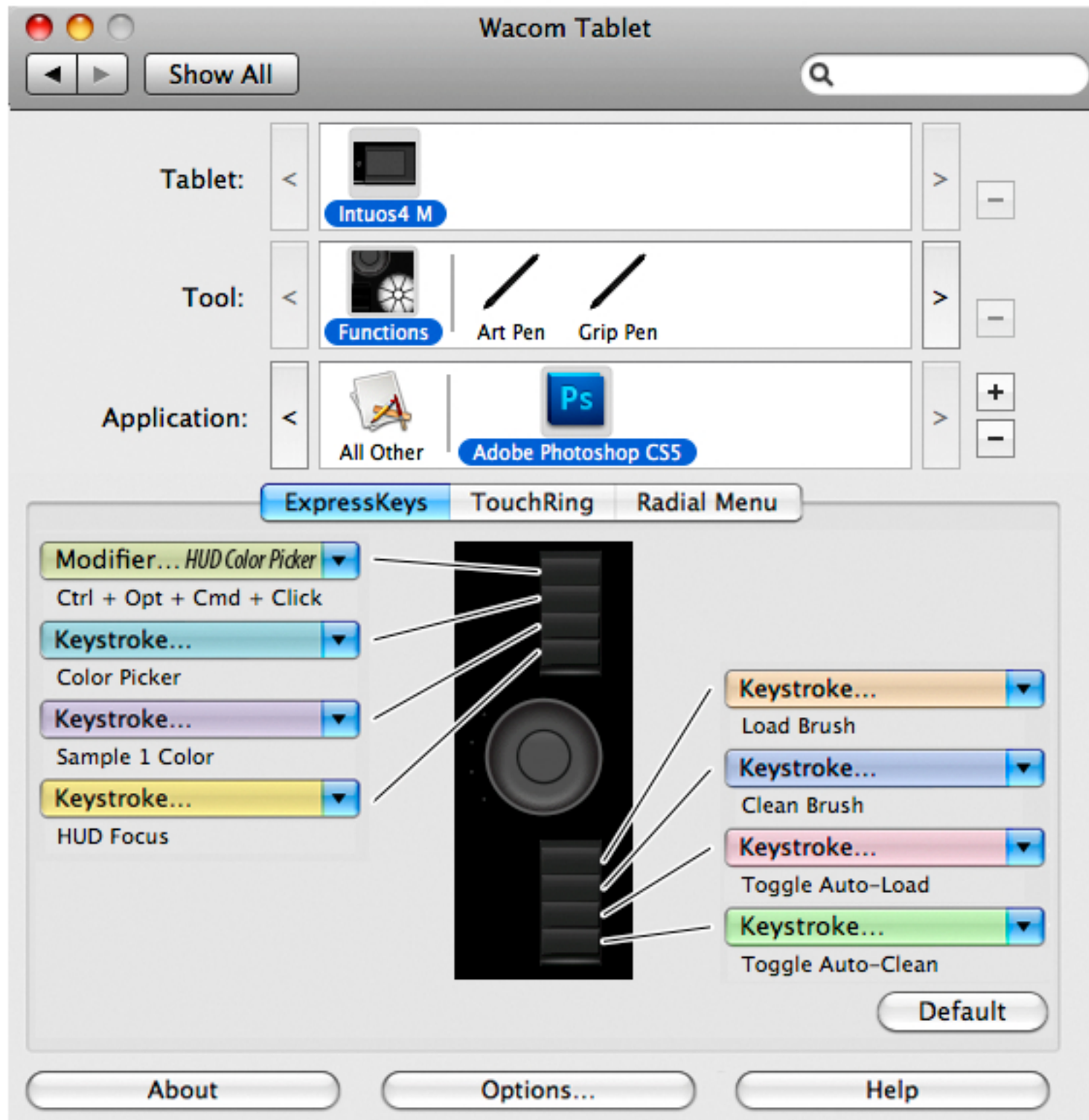


Mapping Adobe® Photoshop® CS5 Mixer Brush & Color Selection Functions to the Wacom Intuos4 Control Surface



ExpressKeys Customization

My tablet is set up for a left-handed user; if you are right-handed, your custom layout may look different.



With the ExpressKeys function set to *Modifier...*, apply the keyboard command listed below.

HUD Color Picker
SHIFT+ALT+Right Click (WIN)
CTRL+OPT+CMD+Click (MAC)

With the ExpressKeys function set to *Keystroke...*, apply the keyboard commands listed below.

Color Picker , (comma) *

Sample 1 Color i Color Sampling Ring

HUD Focus SPACE

The settings and functions shown reflect what I've found to be useful. You may want to experiment and map settings that fit your workflow.

CTRL: Windows **CONTROL** key
CMD: Mac **COMMAND** (⌘) key

With the ExpressKeys function set to *Keystroke...*, apply the keyboard commands listed below.

* **Load Mixer Brush**
SHIFT + , (<)

* **Clean Mixer Brush**
SHIFT + . (>)

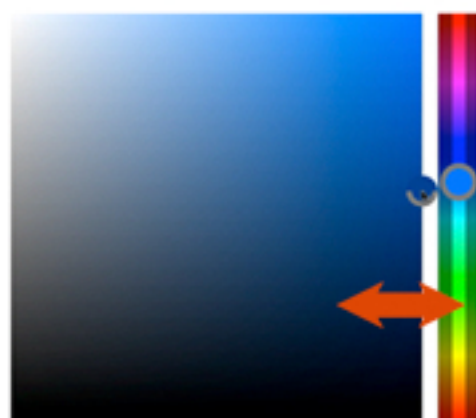
* **Toggle Mixer Brush Auto-Load**
SHIFT + semicolon (;)

* **Toggle Mixer Brush Auto-Clean**
semicolon (;)

* These settings must be manually edited in the *Photoshop Keyboard Shortcuts* in order to match.

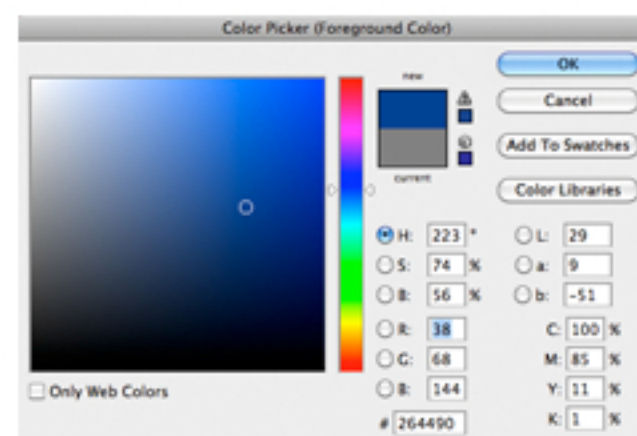
Color Selection Options

HUD (Heads-Up Display) Color Picker Hue Wheel *OpenGL must be enabled to function* **HUD (Heads-Up Display) Color Picker** Hue Strip



Use the **HUD Focus** to toggle between the *Hue* and *Value/Saturation* components

Color Picker
 Adobe



Eyedropper Tool
 Color Sampling Ring

OpenGL must be enabled to function

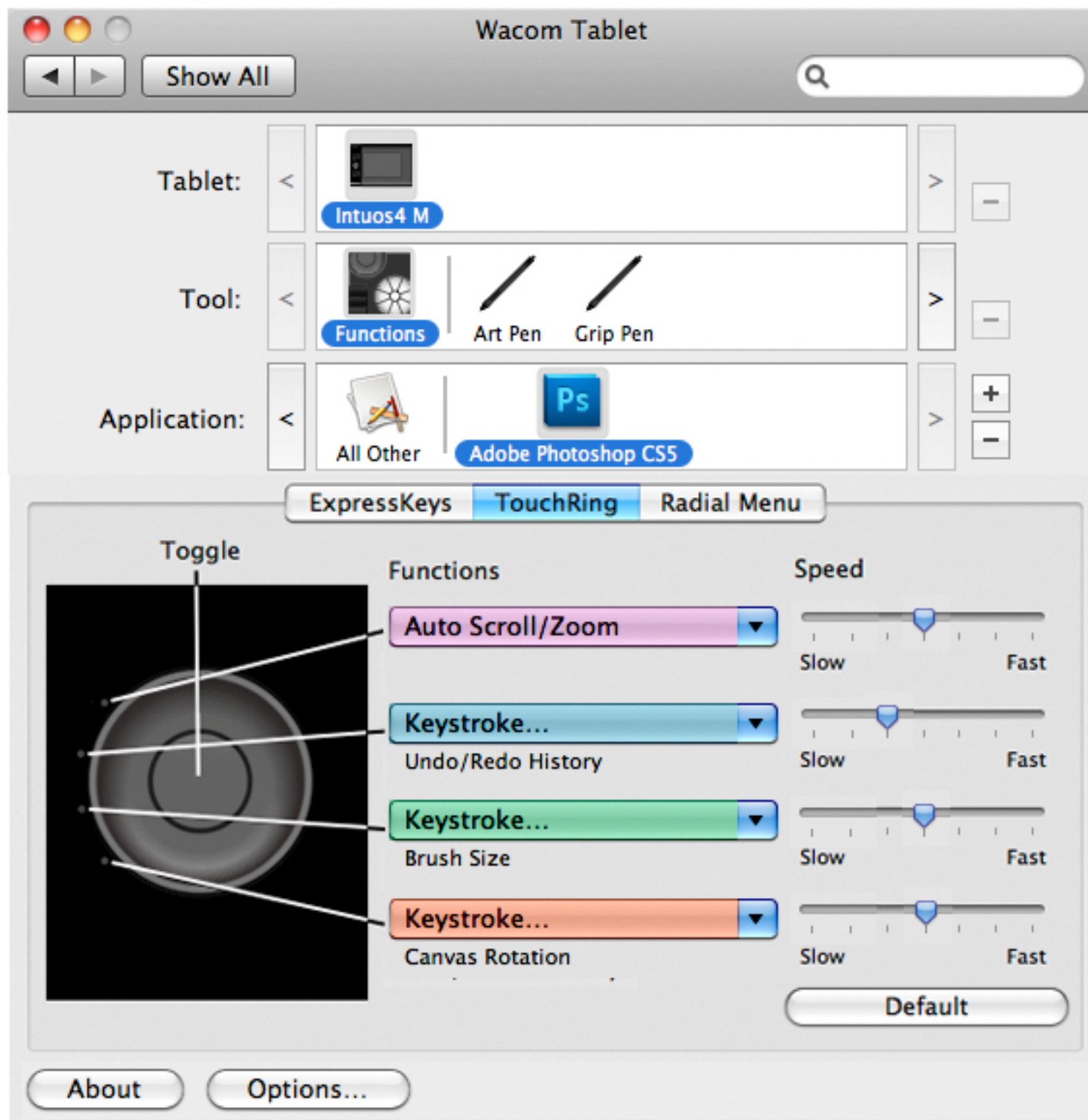


The top section displays the sampled color
 The bottom section displays the current color

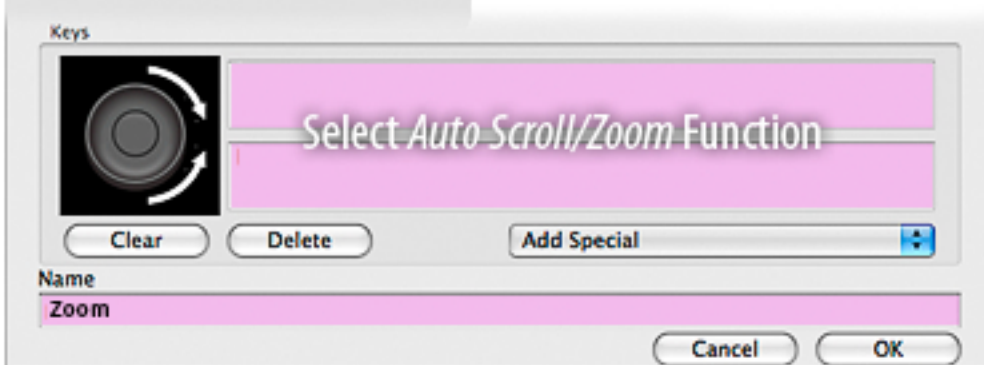
Mapping Adobe® Photoshop® CS5 Mixer Brush & Color Selection Functions to the Wacom Intuos4 Control Surface



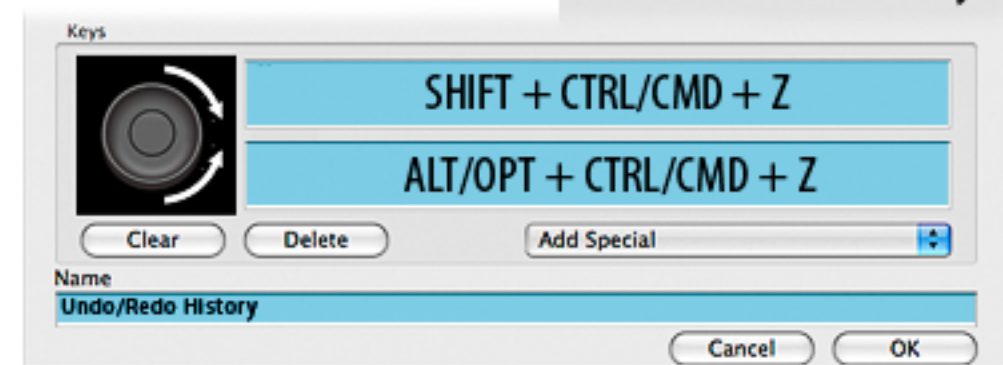
TouchRing Customization



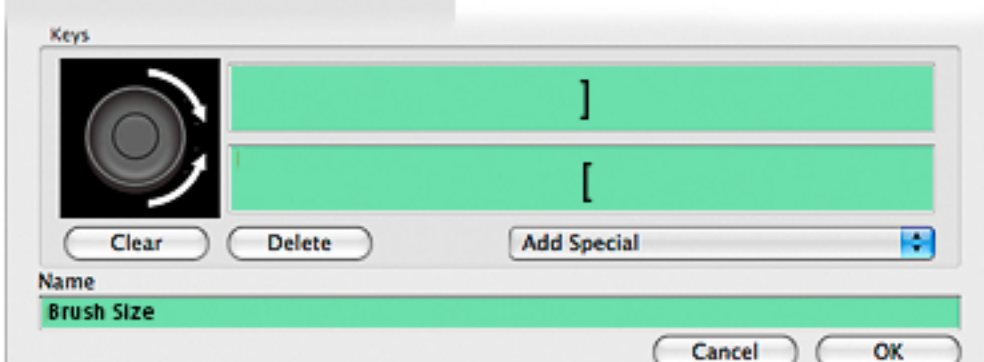
Auto Scroll/Zoom



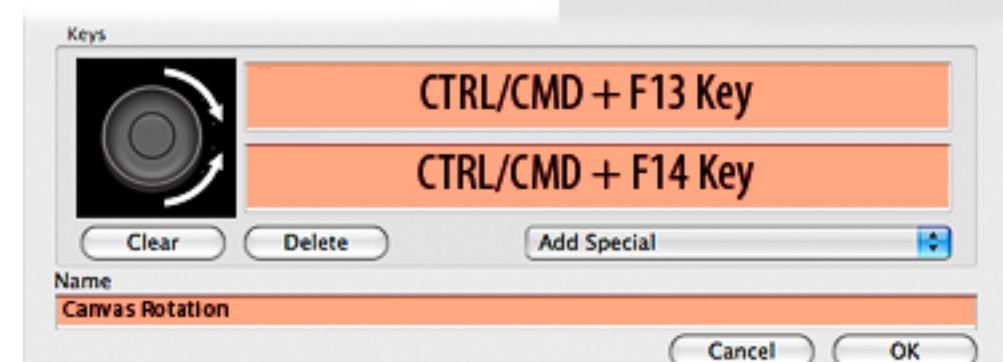
Undo/Redo History



Brush Size



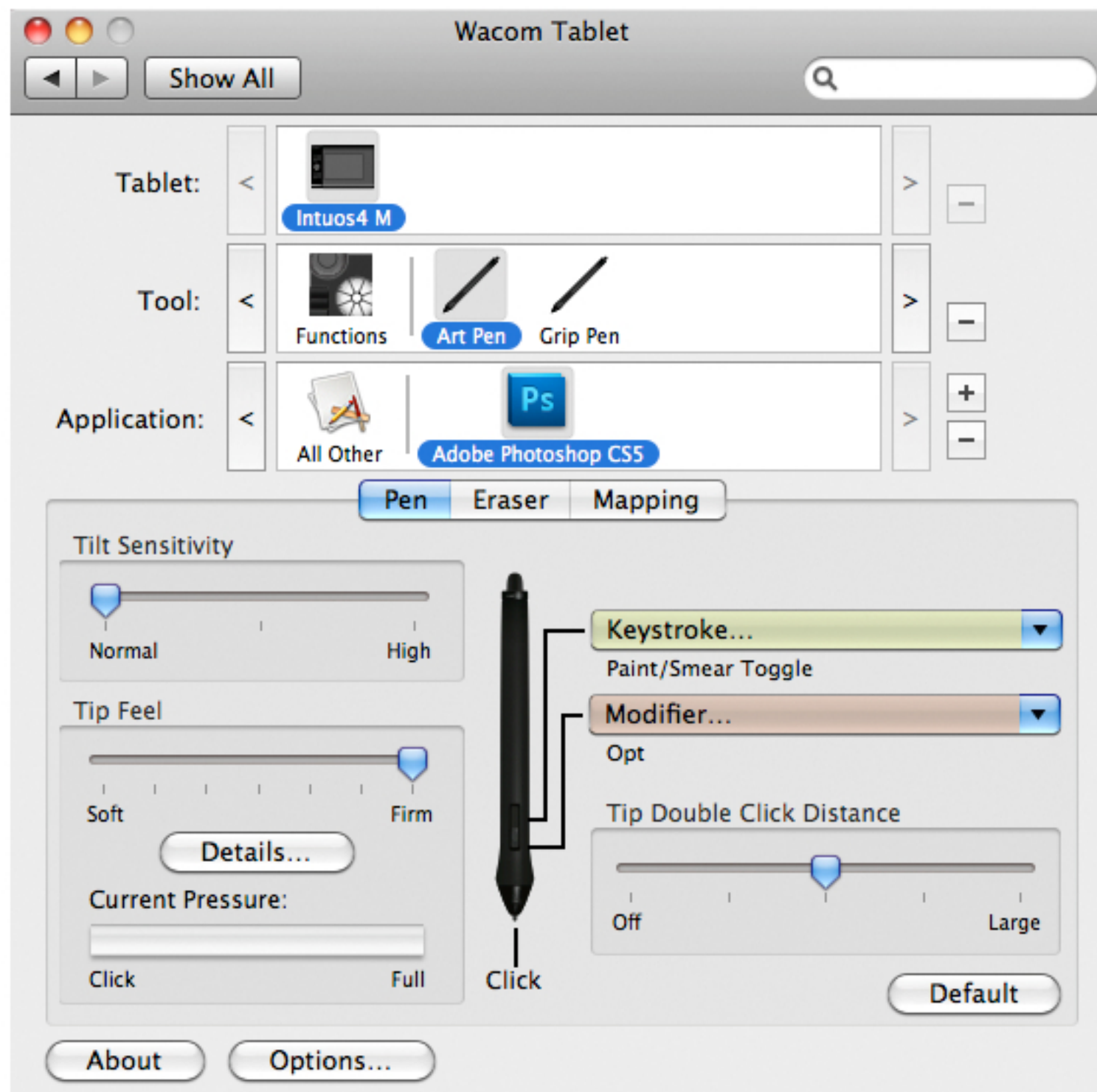
Canvas Rotation



Mapping Adobe® Photoshop® CS5 Mixer Brush & Color Selection Functions to the Wacom Intuos4 Control Surface



Mixer Brush Control via Customized Pen Barrel Buttons



With the Mixer Brush active, alternating between a single- and double-click of the rear button toggles the brush between opaque and smear behaviors.

With the ExpressKeys function set to *Keystroke...*, apply the keyboard command listed below.

Mixer Brush Paint/Smear Toggle
0 (zero)

With the ExpressKeys function set to *Modifier...*, apply the keyboard command listed below.

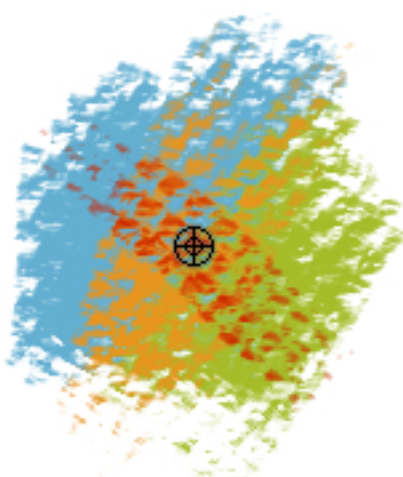
Mixer Brush Load Multiple Colors
ALT/OPT

With the Mixer Brush active, hold the forward button and click on the image. The colors under the brush is loaded for painting.

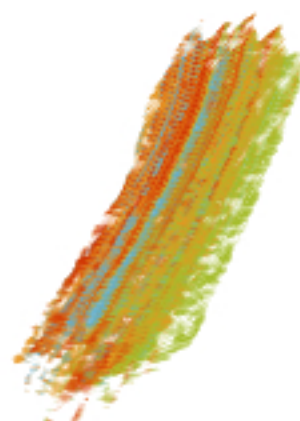
Brush Behavior Options

Front Button Function

Sampling Multiple Colors

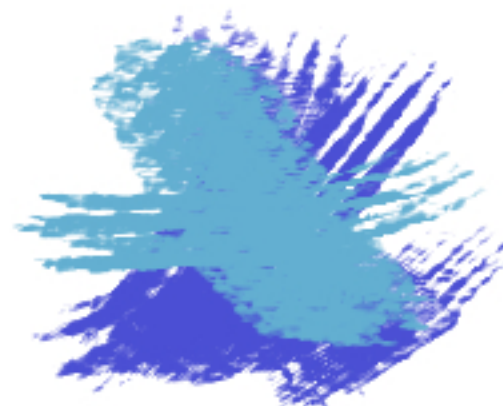


Resulting Loaded Brush stroke



Rear Button Function

Opaque Applied Over Opaque



Smearly Applied Over Opaque

